

# 123 THIRD AVENUE

Southeast corner of 14<sup>th</sup> Street  
New York, NY 10003



RETAIL

*As Exclusive agents we are pleased to offer the following retail opportunity:*

- SIZE:** Ground Floor: 2,958
- FRONTAGE:** 41 Feet on Third Avenue  
90 Feet on 14<sup>th</sup> Street
- CEILING HEIGHTS:** 14 Feet
- POSSESSION:** Third Quarter, 2009
- ASKING RENT:** \$250 PSF
- COMMENTS:** -Prime corner on a major two way cross street  
-New Residential Development  
-Within steps of all major Eastside subway lines
- NEIGHBORS:** Duane Reade, Kiehls, Trader Joes, Jennifer Convertibles,  
Ricky's, Straight From The Crate, Best Buy Mobile, HSBC

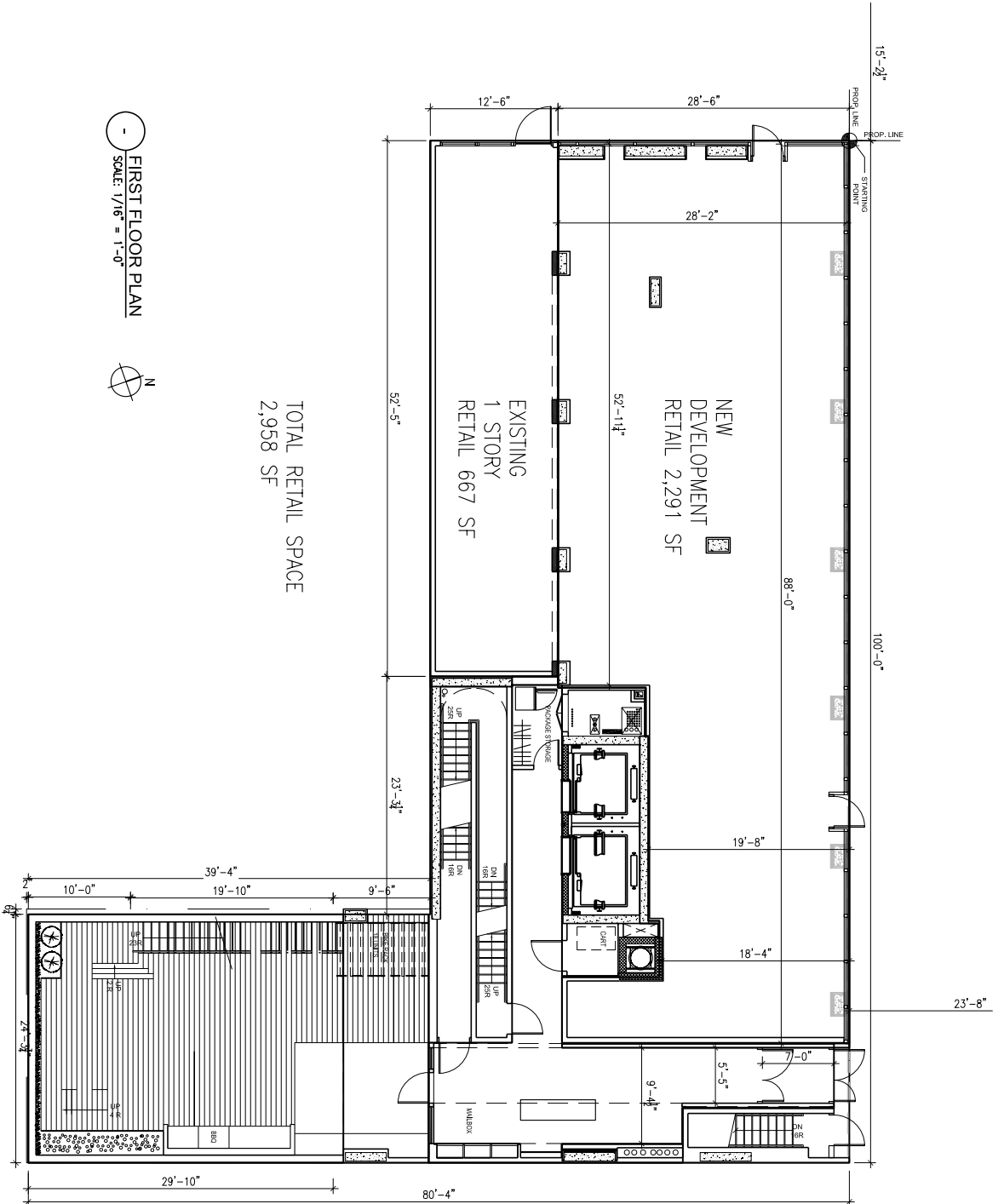
**FOR FURTHER INFORMATION PLEASE CONTACT:**

Steven E. Baker, Managing Director  
212-792-2636  
[stevenb@winick.com](mailto:stevenb@winick.com)

Jeff Winick, CEO  
212-792-2601  
[jeff@winick.com](mailto:jeff@winick.com)

**WINICK REALTY GROUP LLC— LICENSED REAL ESTATE BROKERS**

655 THIRD AVENUE, 8TH FLOOR, NEW YORK, NY 10017 T: 212-792-2600 F: 212-792-2660 [WWW.WINICK.COM](http://WWW.WINICK.COM)



15'-2 1/2"

PROP. LINE  
STARTING POINT

100'-0"

23'-8"

88'-0"

NEW  
DEVELOPMENT  
RETAIL 2,291 SF

52'-1 1/4"

EXISTING  
1 STORY  
RETAIL 667 SF

52'-5"

23'-3 1/4"

19'-8"

18'-4"

9'-4"

5'-5"

7'-0"

80'-4"

29'-10"

TOTAL RETAIL SPACE  
2,958 SF

FIRST FLOOR PLAN  
SCALE: 1/16" = 1'-0"

