

144 WEST 27TH STREET

BETWEEN SIXTH
& SEVENTH AVENUES
NEW YORK, NY 10001

CHELSEA



144

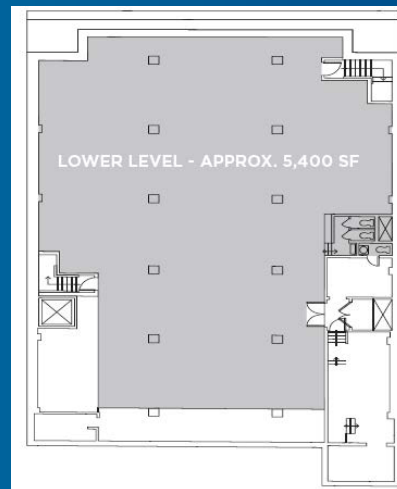
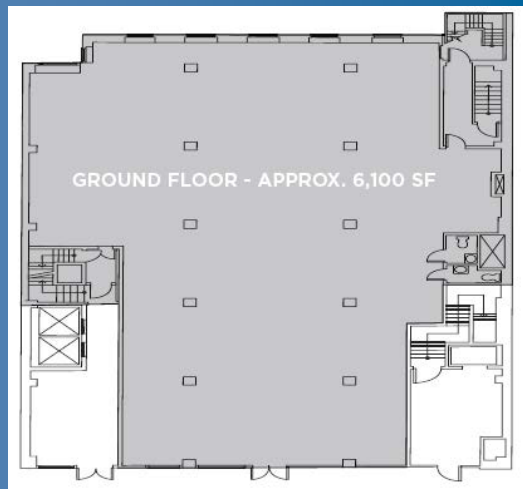
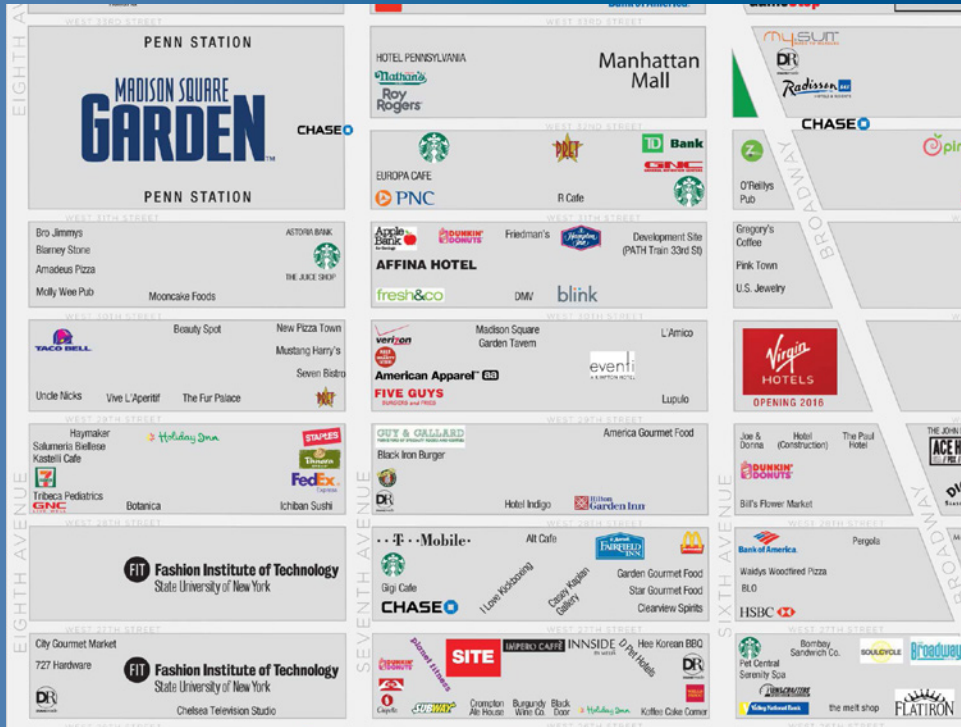
winick
RETAIL SPECIALISTS
RETAIL FOR LEASE
212.792.2600
JEFF WINICK, CEO
LEE BLOCK
344 WEST 27TH STREET • WINICK.COM

3
COMMERCIAL
VEHICLES ONLY
Monday - Friday
8am - 6pm
→

SCAFFOLD
ERECTOR
CONSTRUCTION

SPRINKLER
PROTECTIVE
BUILDING

144 WEST 27TH STREET



ADDRESS

144 West 27th Street – New York, New York 10001
(Between 6th and 7th Avenues)

SIZE

Ground Floor: Approximately 6,100 SF
Selling Lower Level: Approximately 5,400 SF

CEILINGS

Ground Floor: 16'
Lower Level: 10'5"

ASKING PRICE

Upon Request

POSSESSION

Immediate

COMMENTS

- Prime Chelsea retail/restaurant opportunity located steps away from FIT and Penn Station
- Directly adjacent to the new INNSIDE by Melia hotel with over 300 rooms
- Sky lights and windows in the rear of the space on ground and lower levels for great natural light throughout

NEIGHBORS

FIT, INNSIDE by Melia, Kobeyaki, Planet Fitness, Hilton New York, Ainsworth, Chipotle, Rare Bar & Grill

FOR MORE INFORMATION CONTACT EXCLUSIVE AGENTS:

DANIELLE WINICK
212.792.2628
danielle@winick.com

LEE BLOCK, EVP
212.792.2649
lee@winick.com

JEFF WINICK, CEO
212.792.2601
jeff@winick.com

WINICK RETAIL SPECIALISTS

WINICK REALTY GROUP LLC
LICENSED REAL ESTATE BROKERS
655 Third Avenue, 8th Floor, New York, NY 10017
T. 212.792.2600 F. 212.792.2660 winick.com

Although all information regarding property for sale, rental or financing is from sources deemed reliable such information has not been verified, and no express representation is made nor is any to be implied as to the accuracy thereof, and it is submitted subject to errors, omissions, change of price, rental or other conditions, prior sale, lease or financing, or withdrawal without notice.