

# 20 West 37th Street

New York, NY 10018 | Between 5<sup>th</sup> & 6<sup>th</sup> Avenues

# RESTAURANT / RETAIL FOR LEASE





# 20 West 37th Street

New York, NY 10018 | Between 5<sup>th</sup> & 6<sup>th</sup> Avenues

## SIZE (approx.)

Ground Floor 5,800 SF

Mezzanine 850 SF

Basement 3,600 SF

**TOTAL 10,250 SF**

## CEILING HEIGHT

Ground Floor 18 FT

Basement 10 FT

## FRONTAGE (approx.)

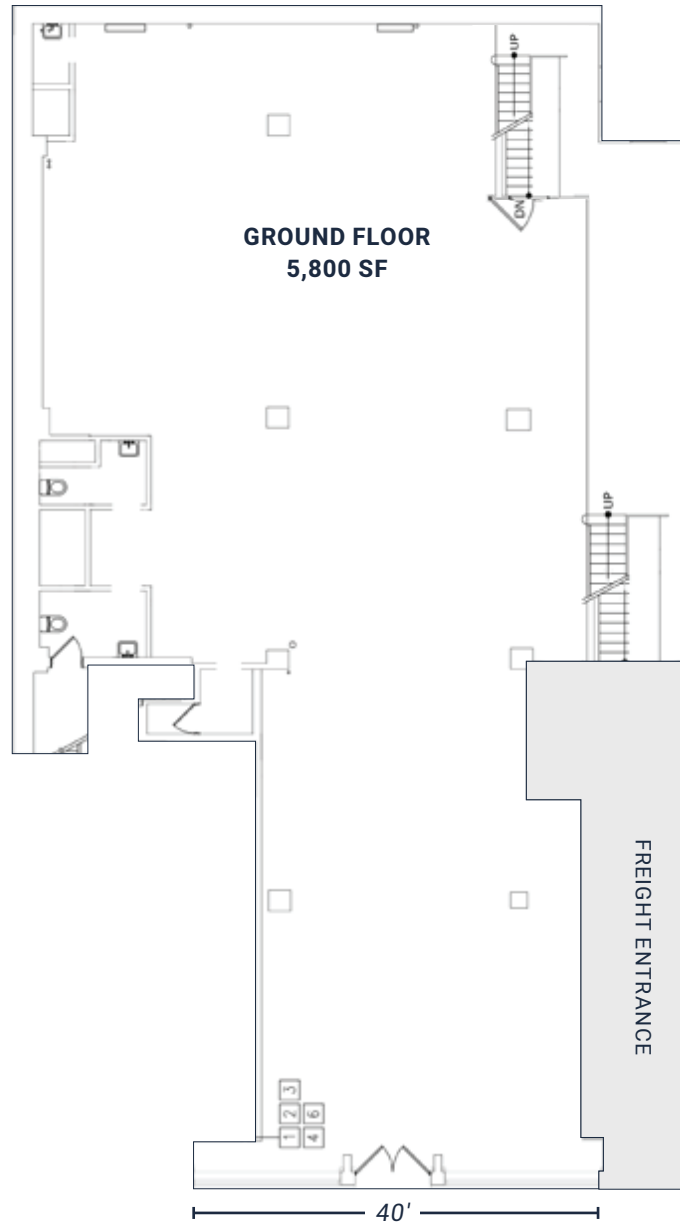
40 FT

## POSSESSION

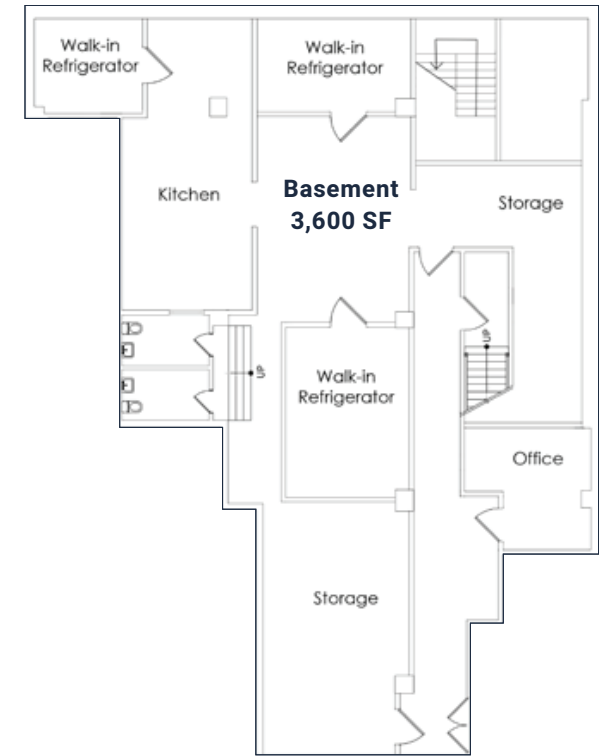
Immediate

## COMMENTS

- Vented space in the center of Midtown
- Dedicated access to freight entrance
- Kitchen and bathrooms in place
- Directly across from multiple hotels and new developments
- Situated between Bryant Park and the Empire State Building on 34th Street



West 37th Street



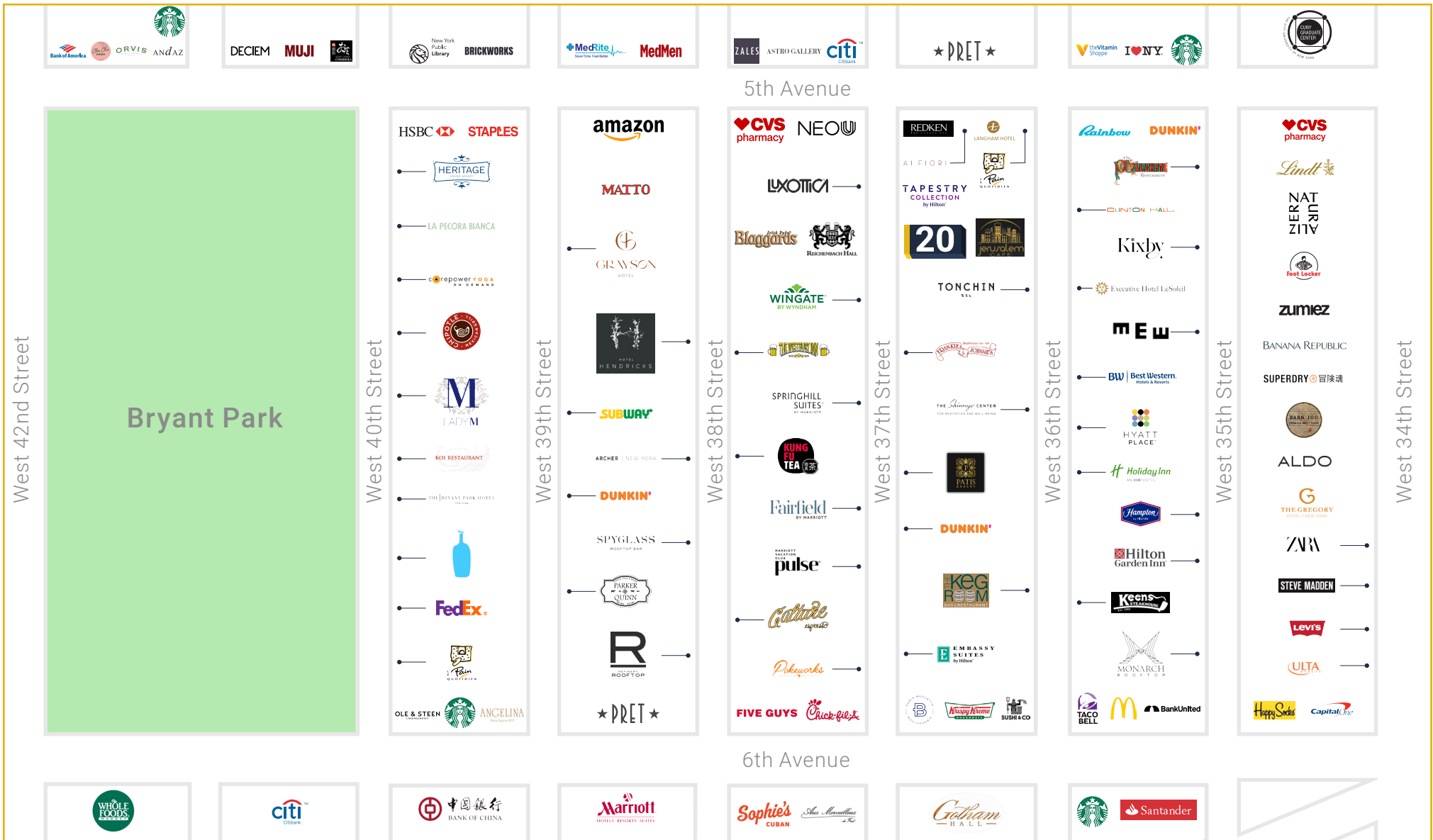
**WINICK REALTY GROUP** Winick Realty Group LLC, Licensed Real Estate Brokers  
655 Third Avenue, 24th Floor | New York, NY 10017  
T 212.792.2600 | F 212.792.2660 | winick.com

ALTHOUGH ALL INFORMATION REGARDING PROPERTY FOR SALE, RENTAL OR FINANCING IS FROM SOURCES DEEMED RELIABLE SUCH INFORMATION HAS NOT BEEN VERIFIED, AND NO EXPRESS REPRESENTATION IS MADE NOR IS ANY TO BE IMPLIED AS TO THE ACCURACY THEREOF, AND IT IS SUBMITTED SUBJECT TO ERRORS, OMISSIONS, CHANGE OF PRICE, RENTAL OR OTHER CONDITIONS, PRIOR SALE, LEASE OR FINANCING, OR WITHDRAWAL WITHOUT NOTICE









**WINICK  
REALTY  
GROUP**

Winick Realty Group LLC, Licensed Real Estate Brokers  
655 Third Avenue, 24th Floor | New York, NY 10017  
T 212.792.2600 | F 212.792.2660 | winick.com

ALTHOUGH ALL INFORMATION REGARDING PROPERTY FOR SALE, RENTAL OR FINANCING IS FROM SOURCES DEEMED RELIABLE SUCH INFORMATION HAS NOT BEEN VERIFIED, AND NO EXPRESS REPRESENTATION IS MADE NOR IS ANY TO BE IMPLIED AS TO THE ACCURACY THEREOF, AND IT IS SUBMITTED SUBJECT TO ERRORS, OMISSIONS, CHANGE OF PRICE, RENTAL OR OTHER CONDITIONS, PRIOR SALE, LEASE OR FINANCING, OR WITHDRAWAL WITHOUT NOTICE

For more information, please contact our exclusive agents:

**Lee Block**

212.792.2649

lee@winick.com

**Jeff Winick**

212.792.2601

jeff@winick.com