

419 PARK AVENUE SOUTH

MIDTOWN SOUTH





419 PARK AVENUE SOUTH

SEC OF E 29TH STREET & PARK AVENUE SOUTH | NEW YORK, NEW YORK 10016

GROUND FLOOR

7,212 SF

MEZZANINE

2,788 SF

BASEMENT

1,873 SF

FRONTAGE

150 FT WRAPAROUND

COMMENTS

- 7 day well trafficked retail corridor
- Fully vented and fixtured restaurant space
- All users considered

NEIGHBORS

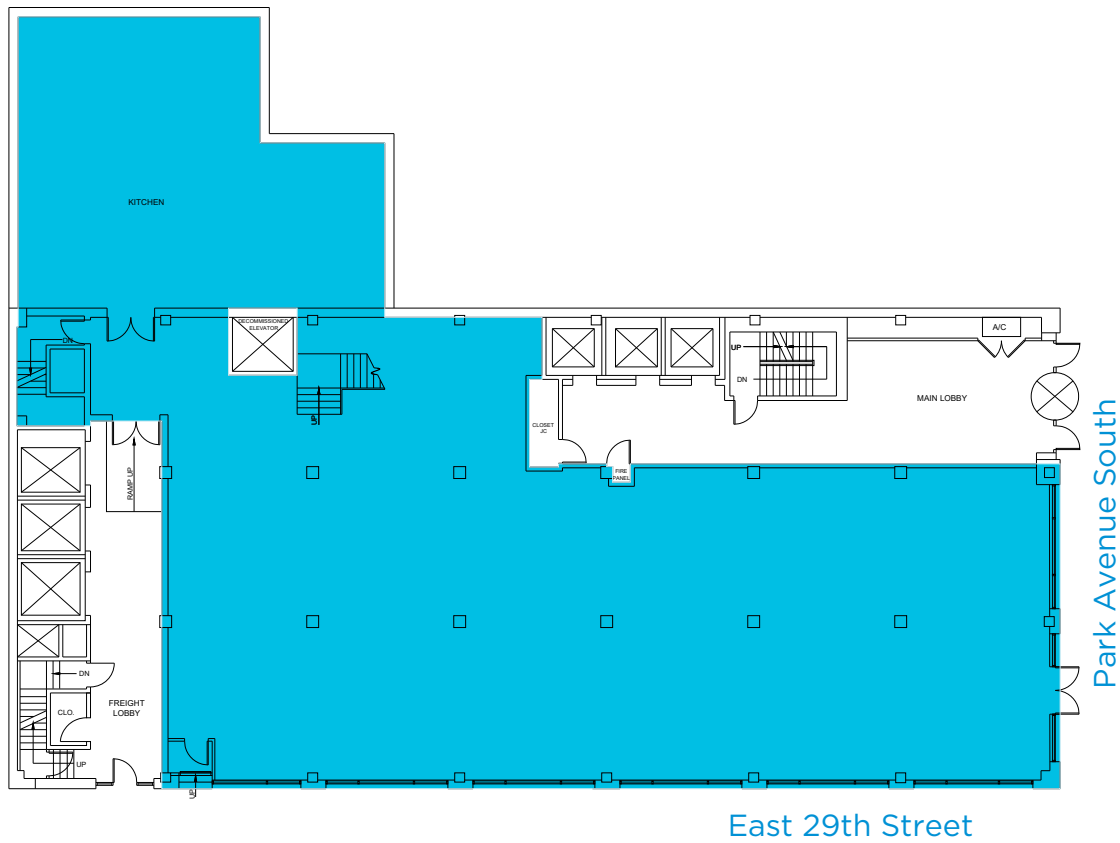
- First Republic Bank, Felix Roasting Co., Starbucks Coffee, TD Bank, CVS Pharmacy, Dos Caminos

PHOTOS

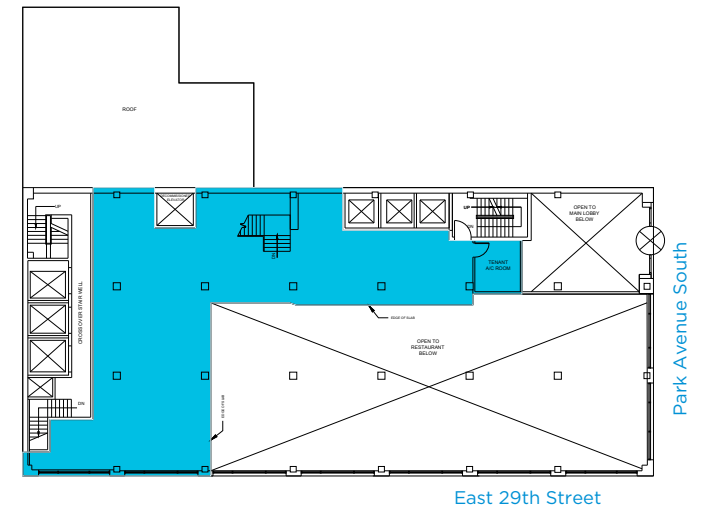


FLOOR PLANS

GROUND FLOOR - 7,212 SF



MEZZANINE - 2,788 SF



BASEMENT - 1,554 SF & 319 SF



419 PARK AVENUE SOUTH

juice GENERATION	OASIS DAY SPA
sweetgreen	BANK OF BARDU
★ PRET ★	citi
CHASE	32nd Street
Capital One	
M&T BANK	Starbucks
CHASE	31st Street
TD Bank	LENWICH
FELIX ROASTING CO.	DUNKIN'
MONDRIAN PARK AVE	baskin BRobbins
	FIRST REPUBLIC BANK
	30th Street
CITY NATIONAL BANK	MENDY'S <small>HOUSERS DELICATESSEN</small>
PARK AVE AUDIO	RAMEN GOKU
SABAI THAI	J'S CLEANERS
verizon	29th Street
Starbucks	SITE
ROYALTON NEW YORK	FRANCIS STANIS LA BRASSERIE Park Avenue
New York Community Bank	VIP
	le café coffee
	28th Street
★ PRET ★	McDonald's
CHASE	DR
	CVS pharmacy
	BARRY'S
	27th Street
HILLSTONE	Sarabeth's Kitchen
INTERBOROUGH	DAVIDE HAIR STUDIO
	MARINA'S PIZZA
	+ DOS CAMINOS +
NY LIFE INSURANCE	BREAD & TULIPS
	HOTEL GIRAFFE

JEFF WINICK
212 792 2600
jeff@winick.com

LEE BLOCK
212 792 2649
lee@winick.com

HAL SHAPIRO
212 792 2623
hal@winick.com

WRG | WINICK
REALTY
GROUP

Winick Realty Group LLC – Licensed Real Estate Brokers

655 Third Avenue, 24th Floor
New York, NY 10017
212 792 2600 www.winick.com

ALTHOUGH ALL INFORMATION REGARDING PROPERTY FOR SALE, RENTAL OR FINANCING IS FROM SOURCES DEEMED RELIABLE SUCH INFORMATION HAS NOT BEEN VERIFIED, AND NO EXPRESS REPRESENTATION IS MADE NOR IS ANY TO BE IMPLIED AS TO THE ACCURACY THEREOF, AND IT IS SUBMITTED SUBJECT TO ERRORS, OMISSIONS, CHANGE OF PRICE, RENTAL OR OTHER CONDITIONS, PRIOR SALE, LEASE OR FINANCING, OR WITHDRAWAL WITHOUT NOTICE.