

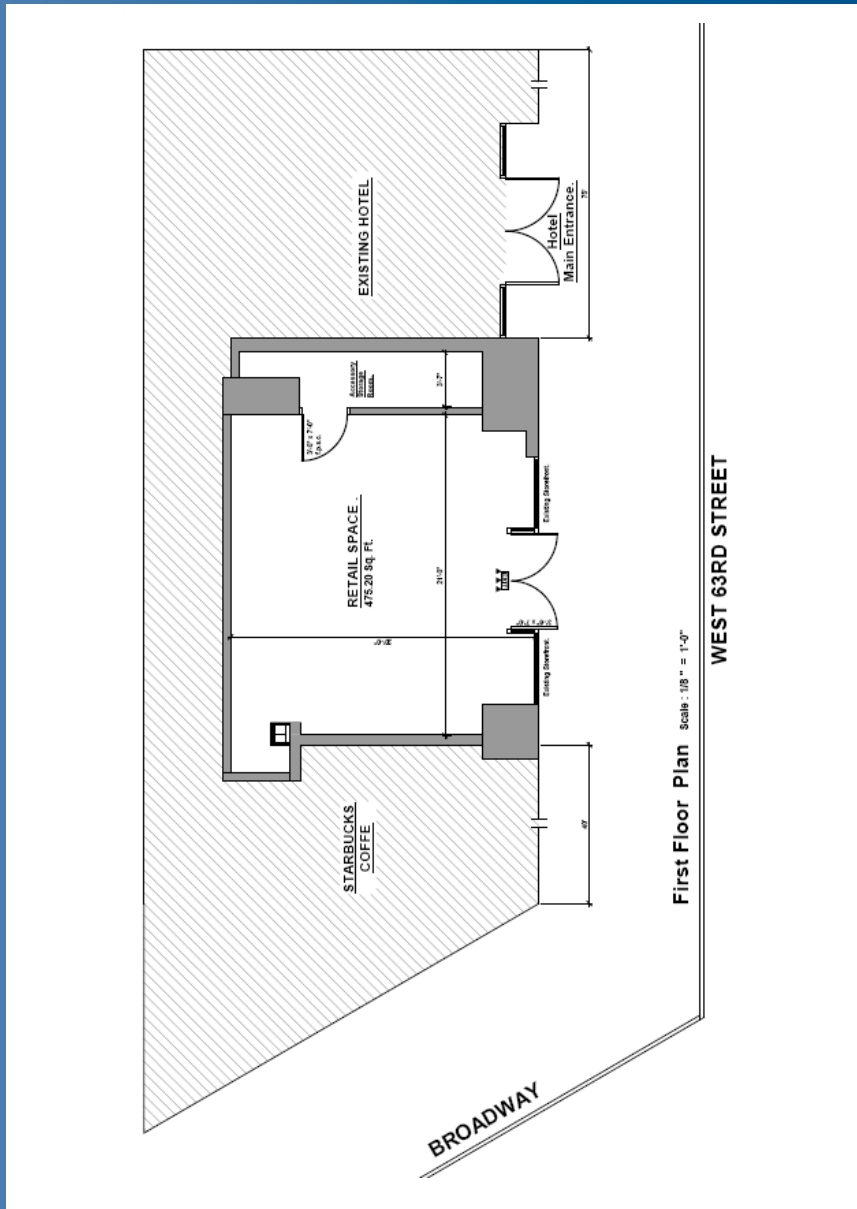
YOUR SIGN

# 44 WEST 63<sup>RD</sup> STREET

BETWEEN BROADWAY AND  
COLUMBUS AVENUE

LINCOLN CENTER

# 44 WEST 63RD STREET



## ADDRESS

44 West 63rd Street, New York, NY 10023  
(Between Broadway and Columbus Avenue)

## SIZE

Ground Floor 475 SF

## ASKING PRICE

Upon Request

## POSSESSION

Immediate

## FRONTAGE

18.5' on West 63rd Street

## COMMENTS

- Extremely rare retail opportunity in the heart of Lincoln Center
- Located at the base of the 420-room, luxury boutique Empire Hotel
- Full glass facade
- Steps from 66th Street/Lincoln Center 1 Subway with over 7,790,234 Riders Annually
- Proximity to 59th Street/Columbus Circle Subway Station with access to 1, 2, B, D, A, C

## NEIGHBORS

Lincoln Center, Century 21, Ed's Chowder House, PJ Clarke's, Starbucks, Duane Reade, Zara, Best Buy, West Elm, Bed Bath & Beyond, Lululemon, Athletica, It's Sugar, Whole Foods, The Smith

FOR MORE INFORMATION CONTACT EXCLUSIVE AGENTS:

**JEFF WINICK, CEO**

212.792.2601

jeff@winick.com

**PATTY HOLMSTROM**

212.792.2612

patty@winick.com

**WINICK** RETAIL SPECIALISTS

WINICK REALTY GROUP LLC  
LICENSED REAL ESTATE BROKERS  
655 Third Avenue, 8th Floor, New York, NY 10017  
T. 212.792.2600 F. 212.792.2660 winick.com

Although all information regarding property for sale, rental or financing is from sources deemed reliable such information has not been verified, and no express representation is made nor is any to be implied as to the accuracy thereof, and it is submitted subject to errors, omissions, change of price, rental or other conditions, prior sale, lease or financing, or withdrawal without notice.