

# 111 EAST 18<sup>TH</sup> STREET

New York, NY 10003 | Flatiron / Gramercy  
Between Park Avenue South & Irving Place





# 111 EAST 18<sup>TH</sup> STREET

New York, NY 10003 | Flatiron / Gramercy  
Between Park Avenue South & Irving Place

## SIZE (approx.)

Ground Floor 5,106 Square Feet  
Mezzanine 1,140 Square Feet  
Lower Level 3,967 Square Feet

## CEILING HEIGHT (approx.)

16 Feet

## FRONTAGE (approx.)

100 Feet on East 18th Street

## ASKING PRICE

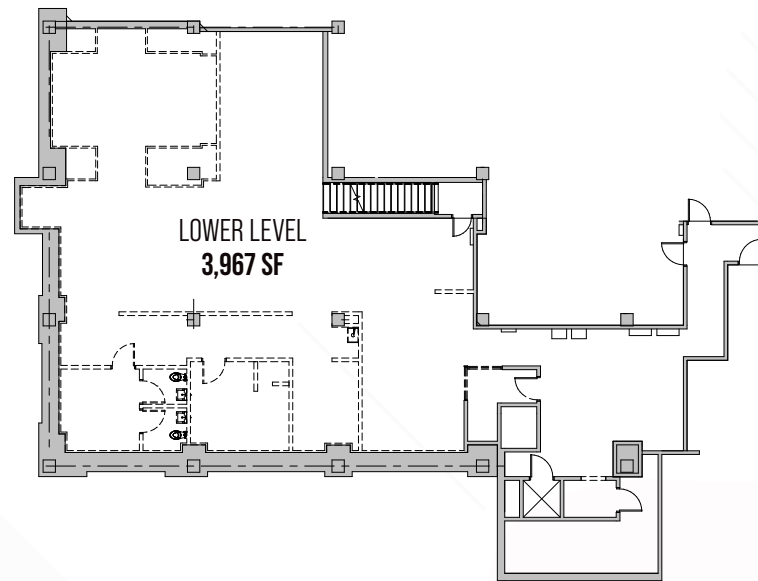
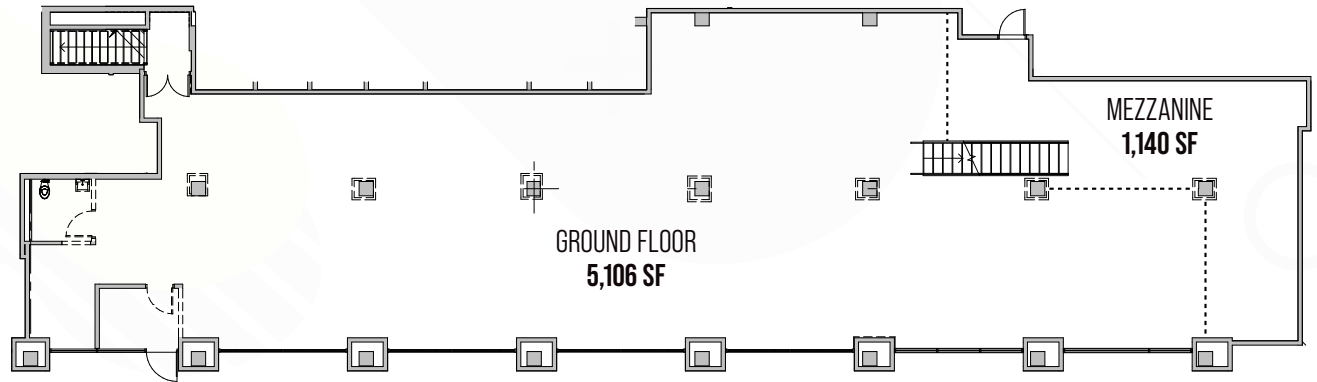
Upon Request

## COMMENTS

- Currently Vacant
- New HVAC being installed
- Term through YE 2031 with additional term possible

## NEIGHBORS

Rothman's, Boucherie, Friend of a Farmer, W Hotel,  
Union Square Green Market, CVS, Barnes and Noble,  
Petco, Herman Miller, Modshop



Winick Realty Group LLC, Licensed Real Estate Brokers  
655 Third Avenue, 24th Floor | New York, NY 10017  
T 212.792.2600 | F 212.792.2660 | winick.com

ALTHOUGH ALL INFORMATION REGARDING PROPERTY FOR SALE, RENTAL OR FINANCING IS FROM SOURCES DEEMED RELIABLE SUCH INFORMATION HAS NOT BEEN VERIFIED, AND NO EXPRESS REPRESENTATION IS MADE NOR IS ANY TO BE IMPLIED AS TO THE ACCURACY THEREOF, AND IT IS SUBMITTED SUBJECT TO ERRORS, OMISSIONS, CHANGE OF PRICE, RENTAL OR OTHER CONDITIONS, PRIOR SALE, LEASE OR FINANCING, OR WITHDRAWAL WITHOUT NOTICE



Winick Realty Group LLC, Licensed Real Estate Brokers  
 655 Third Avenue, 24th Floor | New York, NY 10017  
 T 212.792.2600 | F 212.792.2660 | winick.com

ALTHOUGH ALL INFORMATION REGARDING PROPERTY FOR SALE, RENTAL OR FINANCING IS FROM SOURCES DEEMED RELIABLE SUCH INFORMATION HAS NOT BEEN VERIFIED, AND NO EXPRESS REPRESENTATION IS MADE NOR IS ANY TO BE IMPLIED AS TO THE ACCURACY THEREOF, AND IT IS SUBMITTED SUBJECT TO ERRORS, OMISSIONS, CHANGE OF PRICE, RENTAL OR OTHER CONDITIONS, PRIOR SALE, LEASE OR FINANCING, OR WITHDRAWAL WITHOUT NOTICE

For more info please contact exclusive agents:

**Lee Block**  
 212.792.2649  
 lee@winick.com

**Jeff Winick**  
 212.792.2601  
 jeff@winick.com