

122 NORFOLK STREET

Between Rivington & Delancey Streets



122 NORFOLK STREET

Between Rivington & Delancey Streets

GROUND FLOOR

1,900 SF

POSSESSION

Immediate

ASKING RENT

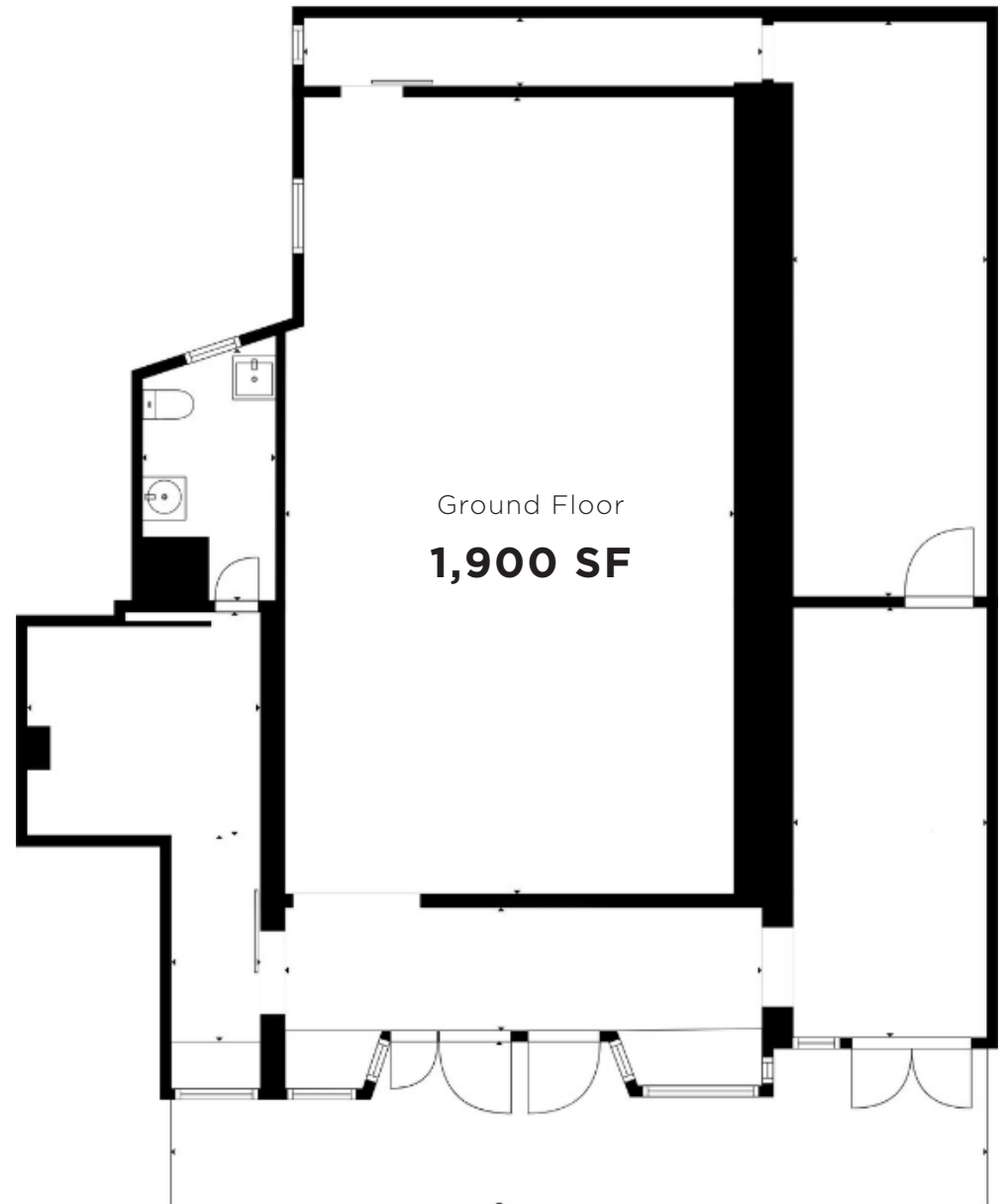
Upon Request

COMMENTS

- Previously Brennan & Griffin Gallery
- Double-wide, charming storefront/window bays
- Tin ceilings and skylights
- Exposed brick and concrete floors
- Multiple entrances/means of egress
- Located steps from the Delancey Street-Essex Street **F M J Z** subway entrance and Essex Market

NEIGHBORS

Shake Shack, Essex, Birria LES, La Caverna, Trader Joe's, The Back Room, The Magician, Sons of Essex, Beauty & Essex, Welcome to the Johnsons, Kaki Sushi, Target, Essex Market, Economy Candy, Nurse Betty, Gotham Burger Social Club (now open)





122 Norfolk Street Interior Photos



Retail Map

122 Norfolk Street

Between
Rivington & Delancey Streets

New York, NY 10002

For more information
please contact our exclusive brokers:

Lee Block

212.792.2649
lee@winick.com

Alexander Karas

212.792.2656
akaras@winick.com

WRG | WINICK
REALTY
GROUP

Winick Realty Group LLC, Licensed Real Estate Brokers

655 Third Avenue, 24th Floor | New York, NY 10017

T 212.792.2600 | F 212.792.2660 | winick.com

ALTHOUGH ALL INFORMATION REGARDING PROPERTY FOR SALE, RENTAL OR FINANCING IS FROM SOURCES DEEMED RELIABLE SUCH INFORMATION HAS NOT BEEN VERIFIED, AND NO EXPRESS REPRESENTATION IS MADE NOR IS ANY TO BE IMPLIED AS TO THE ACCURACY THEREOF, AND IT IS SUBMITTED SUBJECT TO ERRORS, OMISSIONS, CHANGE OF PRICE, RENTAL OR OTHER CONDITIONS, PRIOR SALE, LEASE OR FINANCING, OR WITHDRAWAL WITHOUT NOTICE.

