

**1801**  
**SECOND AVENUE**  
**UPPER EAST SIDE**  
**NEW YORK, NY 10128**



# 1801 SECOND AVENUE

NEW YORK, NY 10128

| NWC of 93rd Street & Second Avenue |

## SIZE (approx.)

Ground Floor: 4,000 Square Feet  
Basement: 2,000 Square Feet

## FRONTAGE

Over 100' of wraparound frontage

## POSSESSION      ASKING PRICE

Immediate

Upon Request

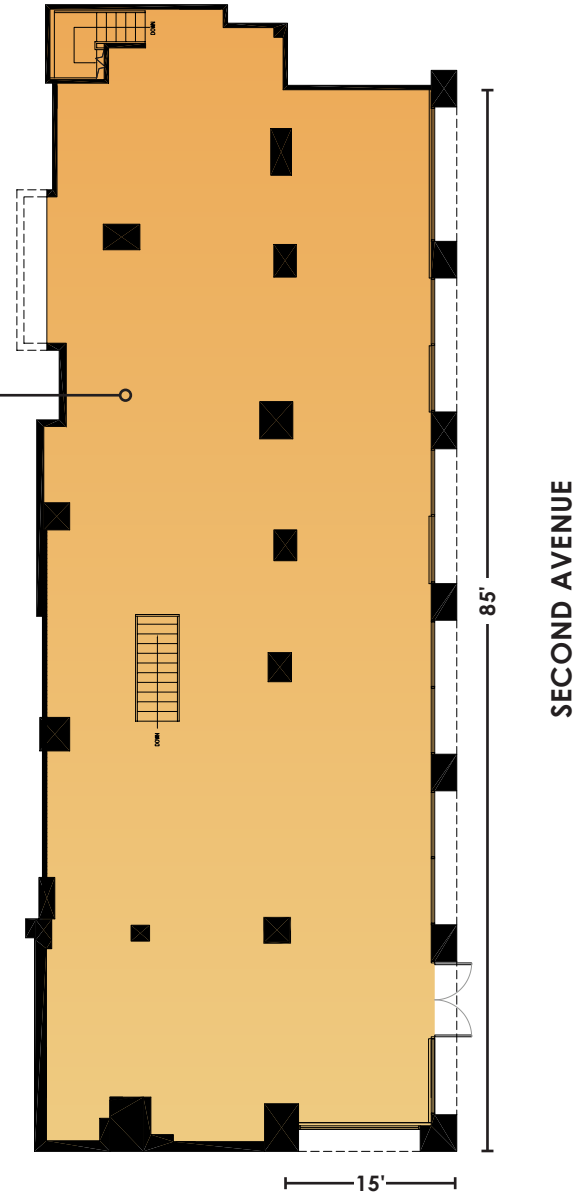
## COMMENTS

- Prime Upper East Side Corner
- 15 foot ceilings
- Divisions considered

## NEIGHBORS

Starbucks, Biscuits & Bath, A-Jiao,  
Yorkville Bagel & Cafe, The Painted  
Lady, Able Nail Spa, ForStyler Hair Salon,  
Synergy Fitness

Ground Floor  
4,000 SF



EAST 93RD STREET



Winick Realty Group LLC, Licensed Real Estate Brokers  
655 Third Avenue, 24th Floor | New York, NY 10017  
T 212.792.2600 | F 212.792.2660 | winick.com

For more information, please  
contact exclusive agent:

**Steven E. Baker**

212.792.2636  
stevenb@winick.com

**Charles Rapuano**

212.792.2658  
charles@winick.com

ALTHOUGH ALL INFORMATION REGARDING PROPERTY FOR SALE, RENTAL OR FINANCING IS FROM SOURCES DEEMED RELIABLE SUCH INFORMATION HAS NOT BEEN VERIFIED, AND NO EXPRESS REPRESENTATION IS MADE NOR IS ANY TO BE IMPLIED AS TO THE ACCURACY THEREOF, AND IT IS SUBMITTED SUBJECT TO ERRORS, OMISSIONS, CHANGE OF PRICE, RENTAL OR OTHER CONDITIONS, PRIOR SALE, LEASE OR FINANCING, OR WITHDRAWAL WITHOUT NOTICE