

23-01

Queens Plaza North

On the corner of 23rd Street

Long Island City | Queens, NY 11101



23-01

Queens Plaza North

On the corner of 23rd Street
Long Island City | Queens, NY 11101

GROUND FLOOR
2,567 SF

CEILING HEIGHT
18 FT

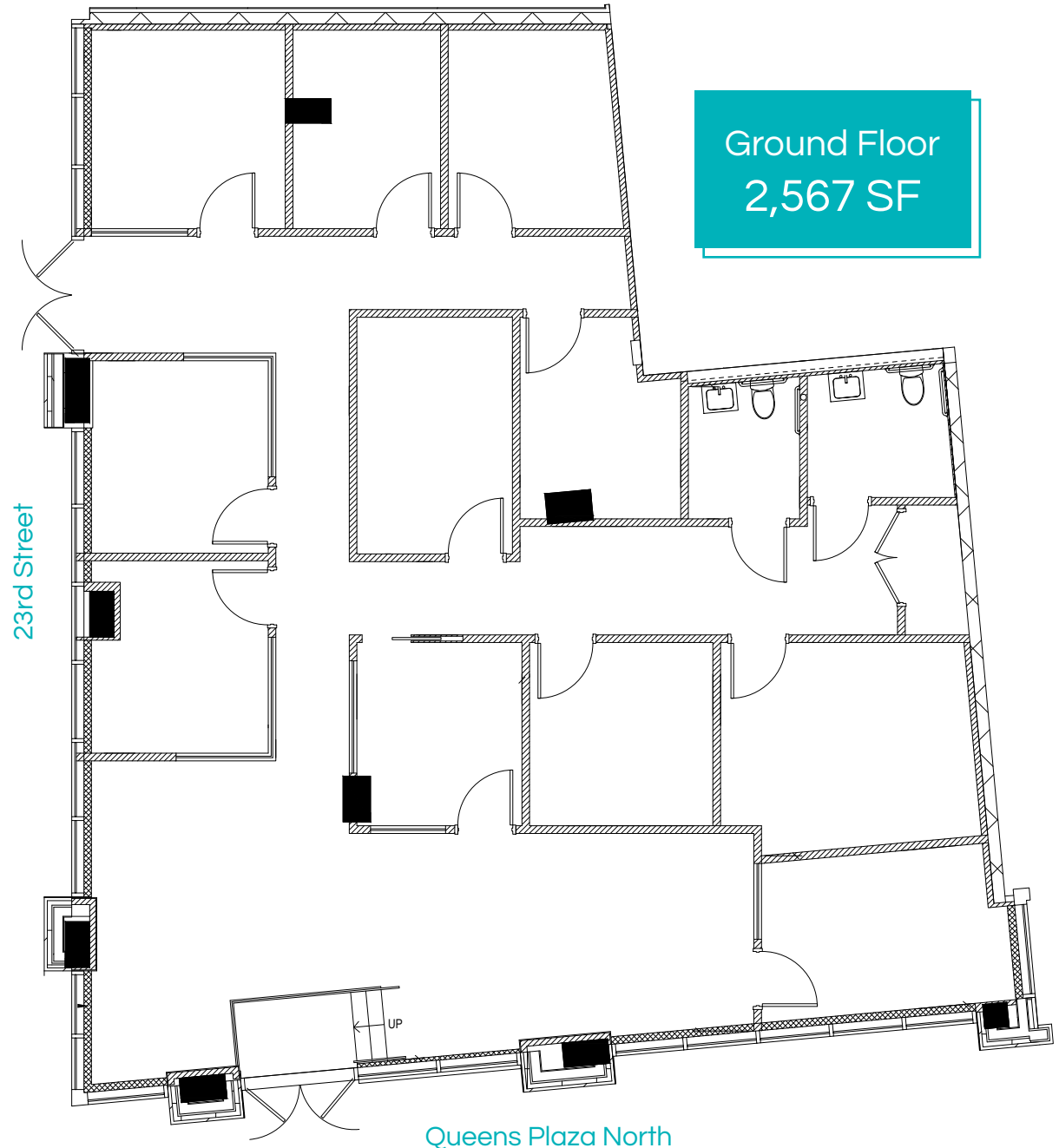
POSSESSION
Arranged

COMMENTS

- Built-out space with HVAC in place
- Next to the Queensboro Plaza **N Q R W E**
M F 7 subway station with over 3.7 M riders annually
- At the base of a fully leased 421-unit luxury residential building
- Over 200,000 cars pass the 59th Street bridge daily
- All uses considered

NEIGHBORS

JetBlue Headquarters, Walgreens, T-Mobile, Bright Horizons, Chase, CityMD



JetBlue
Headquarters



Queensboro
Subway Station



Brooklyn
Boulders



CityMD

23-01

Queens Plaza North

On the corner of 23rd Street
Long Island City | Queens, NY 11101

PLEASE CONTACT EXCLUSIVE BROKERS FOR MORE INFORMATION

Steven E. Baker

212.792.2636

stevenb@winick.com

Tom Galo

212.792.2602

tgalo@winick.com

WRG | WINICK
REALTY
GROUP

Winick Realty Group LLC, Licensed Real Estate Brokers
655 Third Avenue, 24th Floor | New York, NY 10017
T 212.792.2600 | F 212.792.2660 | winick.com

ALTHOUGH ALL INFORMATION REGARDING PROPERTY FOR SALE, RENTAL OR FINANCING IS FROM SOURCES DEEMED RELIABLE SUCH INFORMATION HAS NOT BEEN VERIFIED, AND NO EXPRESS REPRESENTATION IS MADE NOR IS ANY TO BE IMPLIED AS TO THE ACCURACY THEREOF, AND IT IS SUBMITTED SUBJECT TO ERRORS, OMISSIONS, CHANGE OF PRICE, RENTAL OR OTHER CONDITIONS, PRIOR SALE, LEASE OR FINANCING, OR WITHDRAWAL, WITHOUT NOTICE.