

JOIN

6 Subway at 23rd Street

SHAKE SHACK



CHOPT

EAT ALY  
alti cibi



CAVA

# 297 PARK AVENUE SOUTH

SOUTHEAST CORNER OF 23RD STREET  
NEW YORK, NY 10010



# 297 PARK AVENUE SOUTH

## ADDRESS

297 Park Avenue South, New York, NY 10010  
Southeast Corner of 23rd Street

## SIZE

Ground Floor - Approx. 1,700 SF

## FRONTAGE

Approx. 70' of wraparound frontage

## POSSESSION


Immediate

## ASKING RENT

Upon Request

## HIGHLIGHTS

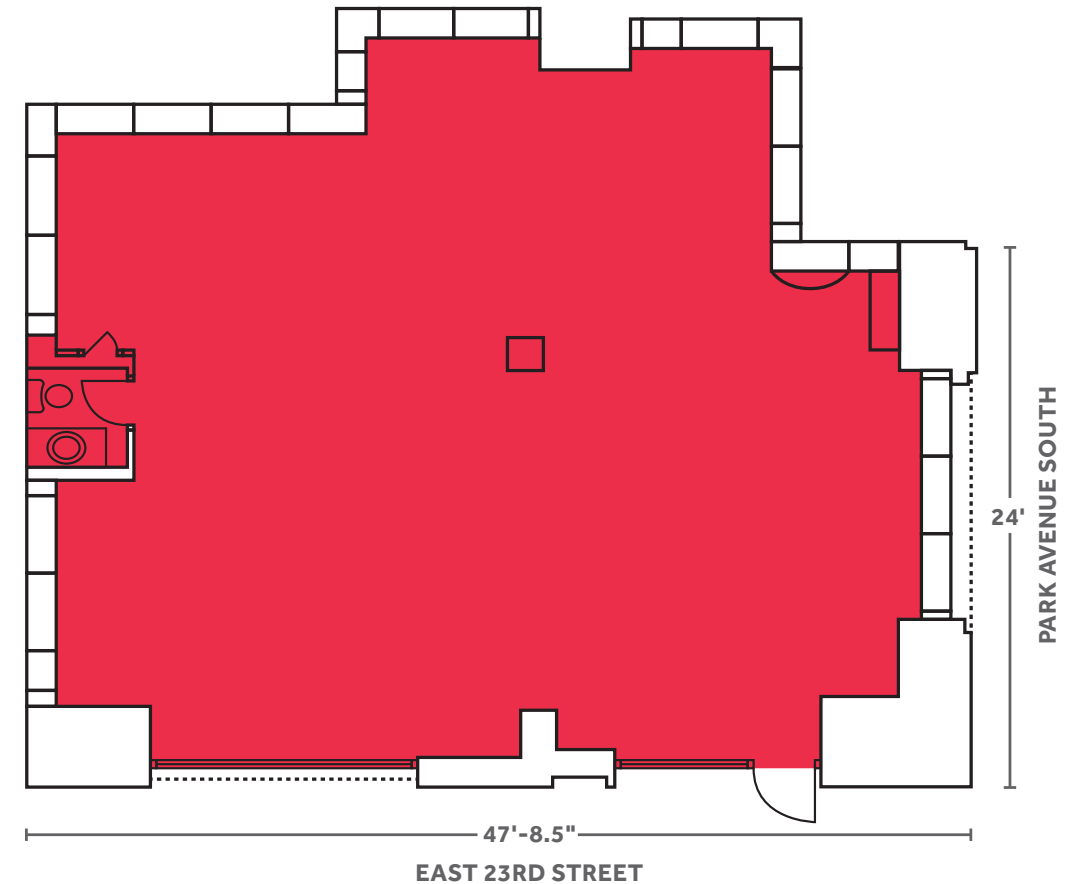
Prime retail situated at the intersection  
of Flatiron and Gramercy districts

Directly next to the  subway stop

## NEIGHBORS

Mircosoft, Credit Suisse, Allbirds, Morton Williams, Eatly,  
Eleven Madison Park, Gramercy Park, Lego, Shake Shack

GROUND FLOOR: **Approx. 1,700 SF**



**WINICK  
REALTY  
GROUP**

Winick Realty Group LLC, Licensed Real Estate Brokers  
655 Third Avenue, 17th Floor | New York, NY 10017  
T 212.792.2600 | F 212.792.2660 | winick.com

ALTHOUGH ALL INFORMATION REGARDING PROPERTY FOR SALE, RENTAL OR FINANCING IS FROM SOURCES DEEMED RELIABLE SUCH INFORMATION HAS NOT BEEN VERIFIED, AND NO EXPRESS REPRESENTATION IS MADE NOR IS ANY TO BE IMPLIED AS TO THE ACCURACY THEREOF, AND IT IS SUBMITTED SUBJECT TO ERRORS, OMISSIONS, CHANGE OF PRICE, RENTAL OR OTHER CONDITIONS, PRIOR SALE, LEASE OR FINANCING, OR WITHDRAWAL WITHOUT NOTICE

For more information, please contact our exclusive agents:

**Steven E. Baker**

**212.792.2636**

**stevenb@winick.com**

**Charles Rapuano**

**212.792.2658**

**charles@winick.com**



**MADISON SQUARE PARK**



**UNION SQUARE**

<p>EAST 25TH STREET</p> <p>SONY</p> <p><b>Fidelity</b></p> <p>CREDIT SUISSE</p>	<p>EAST 25TH STREET</p> <p>Bank of America</p> <p>citi THE CO BEET</p> <p>pressed juicery</p> <p>POTBELLY</p> <p>GREGORYS COFFEE</p> <p>CAVA</p>
<p>EAST 24TH STREET</p> <p>charlie SCHWAB</p> <p>CREDIT SUISSE</p> <p>CHELSEA PIERS fitness</p>	<p>EAST 24TH STREET</p> <p>equinox just salad CoCo TD Bank</p> <p>infinite HUNG HUI BREAD DUNKIN' CREDIT SUISSE</p> <p>Bank of America</p>
<p>EAST 23RD STREET</p> <p>Arbys ZUCKERS SPIN Starbucks Bath &amp; Body Works</p>	<p>EAST 23RD STREET</p> <p>SITE COHEN'S</p> <p>DOS TOROS TAQUERIA EUROPEAN JAZZ CENTER</p>
<p>EAST 22ND STREET</p> <p>F&amp;B nykidsclub MERRILL WILSON</p> <p>LIFETIME HR</p> <p>NANA THAI cosme dalrile poggen MARAZZI poh</p>	<p>EAST 22ND STREET</p> <p>Fotografiska</p> <p>Maialino (vicino)</p>
<p>EAST 21ST STREET</p> <p>okta NEMO FedEx</p> <p>DEVOTION BELFOR SUGARFISH AREL VANNA TRATTORIA IL MULINO THE SHADE STORE</p>	<p>EAST 21ST STREET</p> <p>BLUE BOTTLE Express</p> <p>BRAVO PIZZA</p> <p>Herman Miller</p> <p>Gramercy Park</p>
<p>EAST 20TH STREET</p> <p>NUR GRAMERCY TAVERN BARBOUNIA</p> <p>LOEWES CINEPLEX LaserAway craft Bank of America Starbucks</p>	<p>EAST 20TH STREET</p> <p>L'EXPRESS THE NATIONAL ARMY CLUB</p> <p>ISABELLE'S RESERVA</p> <p>Residential</p> <p>30 YEARS UNION SQUARE CAFE EST. 1985 barnacho</p>
<p>EAST 19TH STREET</p>	<p>EAST 19TH STREET</p>



**GRAMERCY PARK**



**FLATIRON BUILDING**



**WINICK REALTY GROUP**  
 Winick Realty Group LLC, Licensed Real Estate Brokers  
 655 Third Avenue, 17th Floor | New York, NY 10017  
 T 212.792.2600 | F 212.792.2660 | winick.com

ALTHOUGH ALL INFORMATION REGARDING PROPERTY FOR SALE, RENTAL OR FINANCING IS FROM SOURCES DEEMED RELIABLE SUCH INFORMATION HAS NOT BEEN VERIFIED, AND NO EXPRESS REPRESENTATION IS MADE NOR IS ANY TO BE IMPLIED AS TO THE ACCURACY THEREOF, AND IT IS SUBMITTED SUBJECT TO ERRORS, OMISSIONS, CHANGE OF PRICE, RENTAL OR OTHER CONDITIONS, PRIOR SALE, LEASE OR FINANCING, OR WITHDRAWAL WITHOUT NOTICE.

For more information, please contact our exclusive agents:

**Steven E. Baker**  
 212.792.2636  
 stevenb@winick.com

**Charles Rapuano**  
 212.792.2658  
 charles@winick.com