

310 EAST 23RD ST

NEW YORK, NY 10010



2,114 SF RETAIL FOR LEASE



310 EAST 23RD ST

NEW YORK, NY 10010

| Between First and Second Avenues |

SIZE (approx.)

Divisible

Ground Floor: 2,114 SF - 9' Ceiling Height

FRONTAGE (approx.)

15'

POSSESSION ASKING PRICE

Immediate Upon Request

COMMENTS

- Just steps from Stuyvesant Town (11,250 residential units)
- Formerly CKO Kickboxing
- All non-vented uses considered

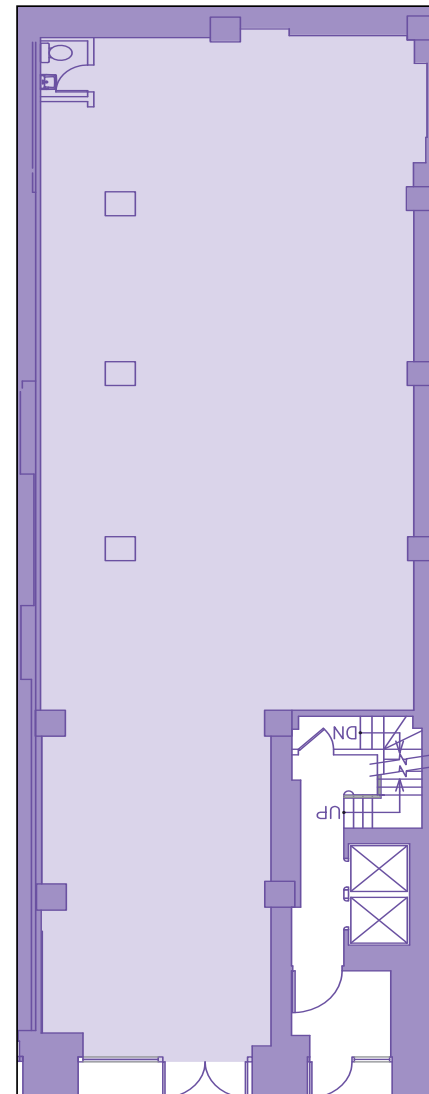
NEIGHBORS

Stuyvesant Town - Peter Cooper

Village, Baruch College, NYU Langone, Mount

Sinai Beth Israel Hospital, Bellevue Hospital,

Morton Williams Supermarket, and many more



EAST 23RD STREET



Winick Realty Group LLC, Licensed Real Estate Brokers
655 Third Avenue, 24th Floor | New York, NY 10017
T 212.792.2600 | F 212.792.2660 | winick.com



ALTHOUGH ALL INFORMATION REGARDING PROPERTY FOR SALE, RENTAL OR FINANCING IS FROM SOURCES DEEMED RELIABLE SUCH INFORMATION HAS NOT BEEN VERIFIED, AND NO EXPRESS REPRESENTATION IS MADE NOR IS ANY TO BE IMPLIED AS TO THE ACCURACY THEREOF, AND IT IS SUBMITTED SUBJECT TO ERRORS, OMISSIONS, CHANGE OF PRICE, RENTAL OR OTHER CONDITIONS, PRIOR SALE, LEASE OR FINANCING, OR WITHDRAWAL WITHOUT NOTICE

For more information, please contact our exclusive agents:

Steven E. Baker

212.792.2636

stevenb@winick.com

Daniyel Cohen

212.792.2610

dcohen@winick.com

Thomas Galo

212.792.2602

tgalo@winick.com

DEMOGRAPHICS WITHIN A 5 MINUTE WALK

KEY FACTS



25,502
Population



\$128,354
Medium HH Income



915
Total Businesses



15,618
Total Employees

SPENDING POWER



\$2.2 Billion
Annual Retail Spending



\$678 Million
Retail Spending



\$262 Million
Food



\$88 Million
Entertainment

TRANSPORTATION



5.4M RIDERS
23rd St - 8 Min Walk



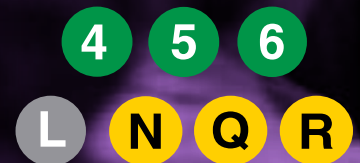
4.3M RIDERS
28th St - 13 Min Walk



1.5M RIDERS
3rd Ave - 13 Min Walk



5.7M RIDERS
1st Ave - 13 Min Walk



21.4M RIDERS
Union Sq- 17 Min Walk

310 EAST 23RD ST



**WINICK
REALTY
GROUP**

Winick Realty Group LLC, Licensed Real Estate Brokers
655 Third Avenue, 24th Floor | New York, NY 10017
T 212.792.2600 | F 212.792.2660 | winick.com

ALTHOUGH ALL INFORMATION REGARDING PROPERTY FOR SALE, RENTAL OR FINANCING IS FROM SOURCES DEEMED RELIABLE SUCH INFORMATION HAS NOT BEEN VERIFIED, AND NO EXPRESS REPRESENTATION IS MADE NOR IS ANY TO BE IMPLIED AS TO THE ACCURACY THEREOF, AND IT IS SUBMITTED SUBJECT TO ERRORS, OMISSIONS, CHANGE OF PRICE, RENTAL OR OTHER CONDITIONS, PRIOR SALE, LEASE OR FINANCING, OR WITHDRAWAL WITHOUT NOTICE

For more information, please contact our exclusive agents:

Steven E. Baker

212.792.2636
stevenb@winick.com

Daniyel Cohen

212.792.2610
dcohen@winick.com

Thomas Galo

212.792.2602
tgalo@winick.com