



SITE SUBMISSION

SIZE SPEC REQUIREMENTS

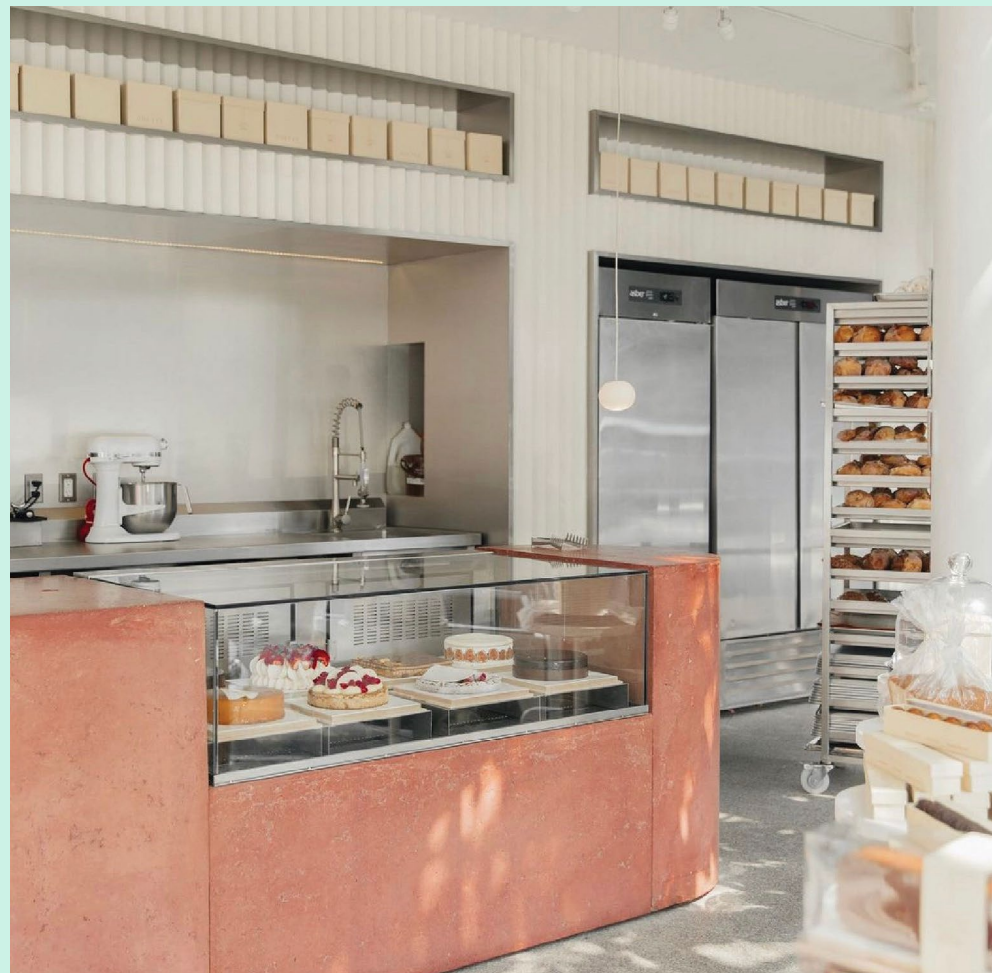
1,500 - 2,500 SF

venting preferred but not required
400 AMP

LOCATION PARAMETERS

↳ (Manhattan)
East/West Village
Greenwich Village
NoHo/SoHo/Nolita

↳ (Brooklyn)
Williamsburg
Dumbo
Greenpoint



BRIEF INTRO

Hani's is a contemporary American bakery and café by Miro Uskokovic.

SUBMIT SITES

Michael Shkreli
212-792-2638
mshkreli@winick.com

Eli Gold
212-792-2626
egold@winick.com





BRIEF INTRO

Hani's is a contemporary American bakery and café by Miro Uskokovic. Hani's pays homage to multiple influences - Old World baking techniques, New York City's diverse and multi-cultural energy, and the simple comfort of classic American desserts.

BAKING & CAFE SECTOR

The bakery and cafe cafe business, an \$11.4BN sector, has been among the strongest performers of the broader foodservice sector, with **an average annual growth of 2%**. According to America Baker Association, sales of **baked products increased by 62.3%** during this global pandemic, proving this concept's resilience and adaptability even in the most extreme circumstances.

SUBMIT SITES

Michael Shkreli
212-792-2638
mshkreli@winick.com

Eli Gold
212-792-2626
egold@winick.com