

226

West 50th Street

NEW YORK, NY 10019 | TIMES SQUARE

SPACE A

SPACE B

icon 24 hr.

226

West 50th Street

NEW YORK, NY 10019 | TIMES SQUARE

SIZE	SPACE A	SPACE B
------	---------	---------

Ground Floor	1,037 SF	993 SF
Lower Level	1,144 SF	

FRONTAGE	25 FT	26.5 FT
----------	-------	---------

POSSESSION

Immediate

COMMENTS

- Turn-key restaurant and bar space
- Formerly Natsumi
- Steps from the 1, B, C, D, E, N, R, and W subway lines

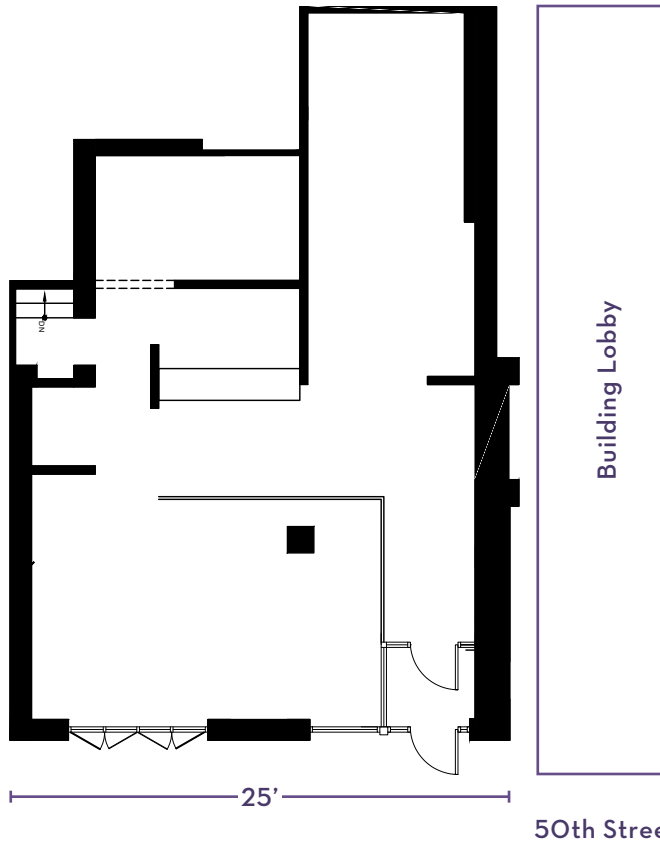
NEIGHBORS

The Palm, Toloache, Carnegie Diner & Cafe, Gershwin Theater, Ambassador Theatre, Eugene O'Neil Theatre, Citizen M Hotel,

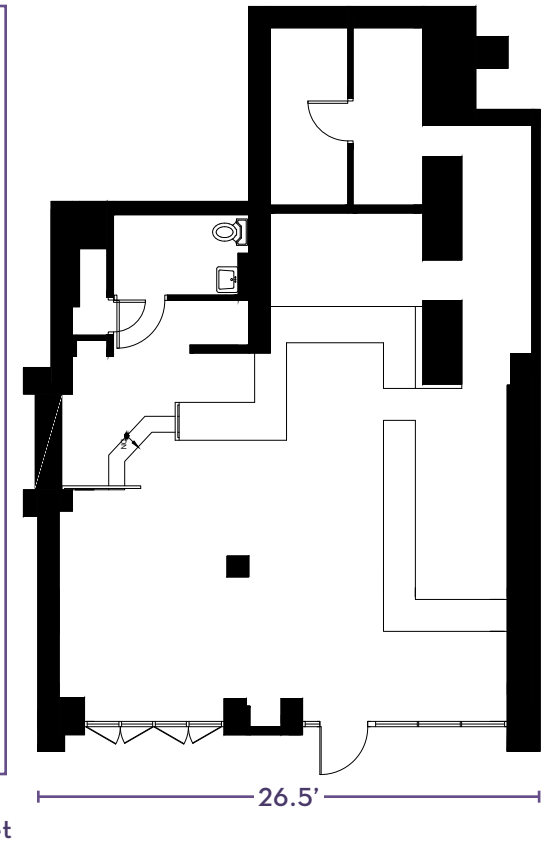
WRG | **WINICK REALTY GROUP** Winick Realty Group LLC, Licensed Real Estate Brokers
655 Third Avenue, 24th Floor | New York, NY 10017
T 212.792.2600 | F 212.792.2660 | winick.com

ALTHOUGH ALL INFORMATION REGARDING PROPERTY FOR SALE, RENTAL OR FINANCING IS FROM SOURCES DEEMED RELIABLE SUCH INFORMATION HAS NOT BEEN VERIFIED, AND NO EXPRESS REPRESENTATION IS MADE NOR IS ANY TO BE IMPLIED AS TO THE ACCURACY THEREOF, AND IT IS SUBMITTED SUBJECT TO ERRORS, OMISSIONS, CHANGE OF PRICE, RENTAL OR OTHER CONDITIONS, PRIOR SALE, LEASE OR FINANCING, OR WITHDRAWAL WITHOUT NOTICE

GROUND FLOOR - Space A
Restaurant - 1,037 SF



GROUND FLOOR - Space B
Bar - 993 SF



BASEMENT - Space A
Restaurant - 1,144 SF

